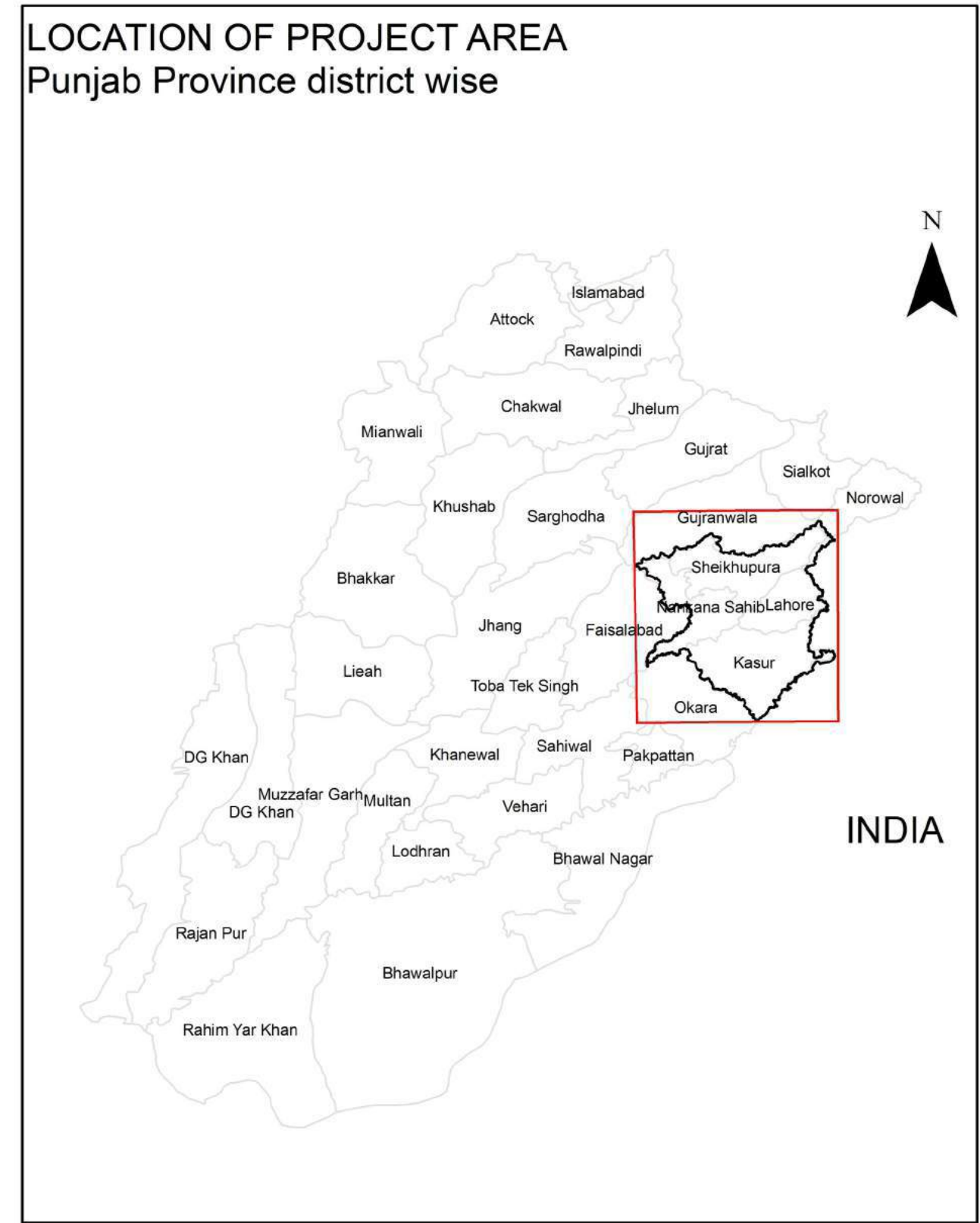
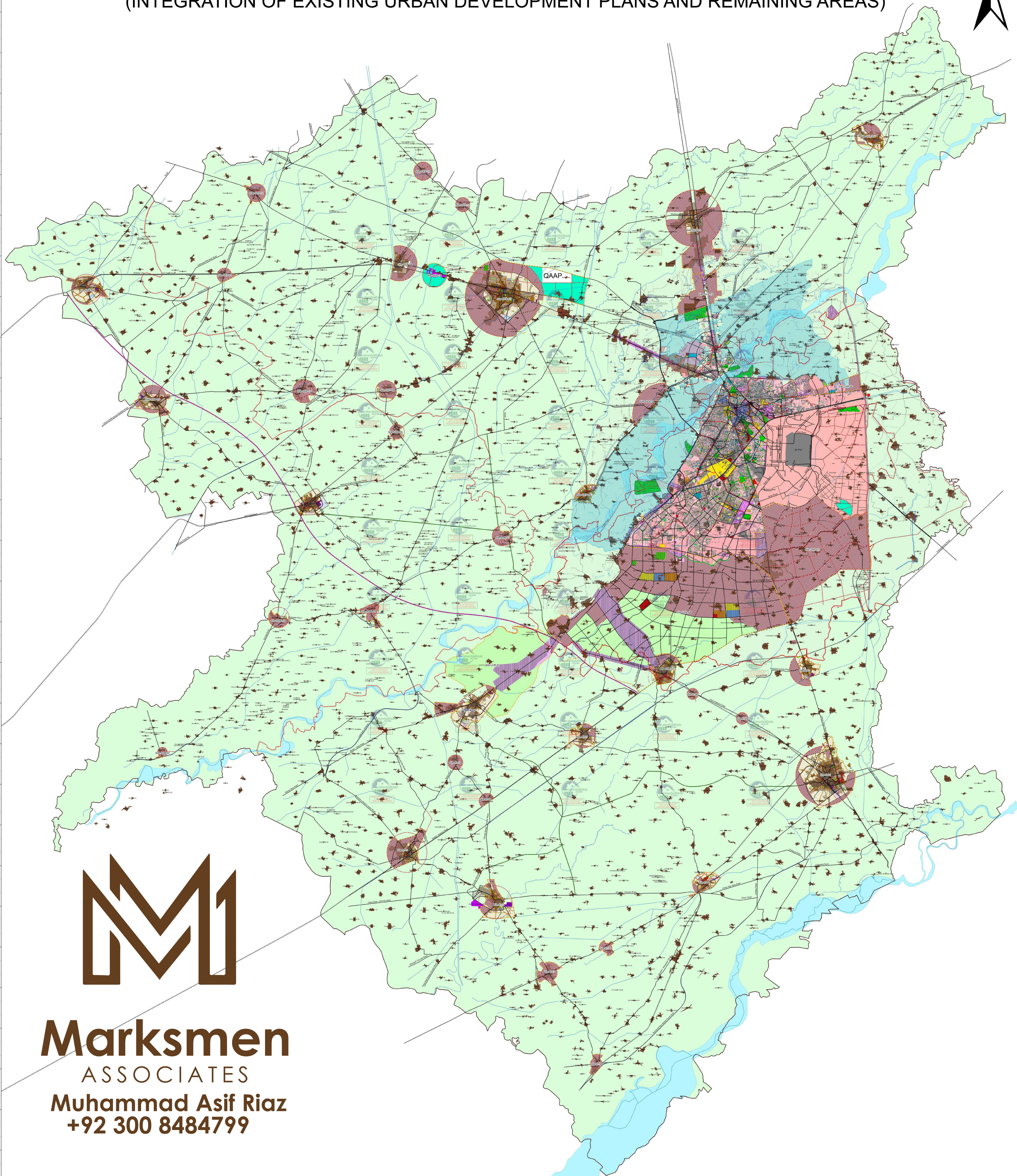


# AMENDED MASTER PLAN OF LAHORE DIVISION

## (INTEGRATION OF EXISTING URBAN DEVELOPMENT PLANS AND REMAINING AREAS)



**LEGEND:**

- TOPOGRAPHIC FEATURES:**
- Lahore Division Boundary
  - District Boundaries
  - Project Sites Boundaries
  - RRFUD Boundary
  - Settlements
  - River
  - Major Road Network
  - Railway Line
  - Water Channels

**NOTIFIED LAND USES OF OUTLINE DEVELOPMENT PLANS:**

Existing Landuses	Proposed Landuses
■ Residential	■ Residential
■ Commercial	■ Commercial
■ Public Building	■ Public Building
■ Industrial	■ Educational Institution
■ Educational Institution	■ Graveyard
■ Vacant Land	■ Health Facilities
■ Graveyard	■ Industrial
■ Health Facilities	■ Institution
■ Institutional Cum Office	■ Institutional Cum Office
■ Open Space	■ Open Space
■ Orchard	■ Orchard
■ Public Utilities	■ Public Utilities
■ Religious	
■ Restricted Area	
■ Area Under Water	

**NOTIFIED LAND USES OF IMPL-2021:**

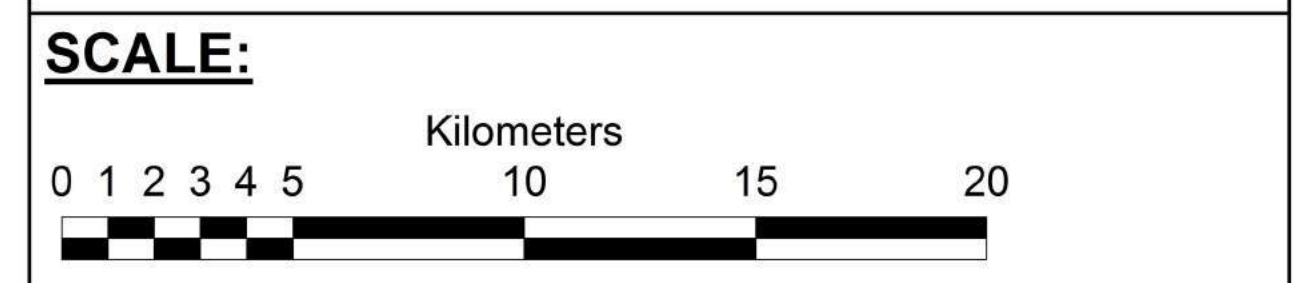
■ Residential	■ Proposed Residential
■ Retail/Commercial	■ Central/Commercial
■ Educational	■ Proposed Educational
■ Institutional	■ Institutional/Commercial
■ Parks/Recreational	■ Regional Parks
■ Existing Health	■ Proposed Major Hospitals
■ Medium/Heavy Industry	■ Light/Medium Industry
■ Agriculture	

**AMENDED MASTER PLAN LAND USES:**

Proposed Land uses	Proposed Links
■ Residential	— Intra City
■ Agriculture	— Inter City
■ Special Development Zone	— Railway line

Director General, LDA	<i>Nabeel Javed</i>
Chief Metropolitan Planner, LDA	<i>[Signature]</i>
Director Metropolitan Planning - II, LDA	<i>[Signature]</i>

**MAP TITLE:**  
AMENDED MASTER PLAN OF LAHORE DIVISION



**Marksmen**  
ASSOCIATES  
Muhammad Asif Riaz  
+92 300 8484799